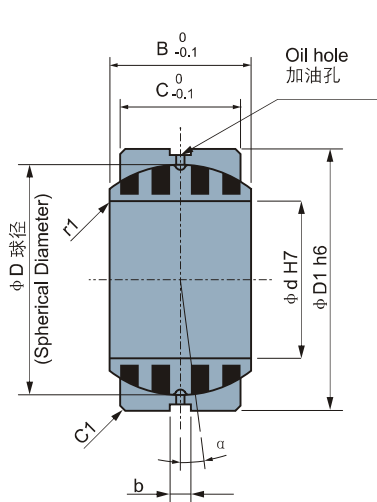
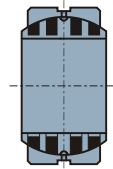


JDBS Metric Spherical Bushes 自润滑关节轴承

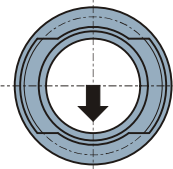


Spherical bushing assembly

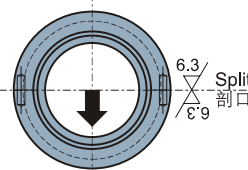
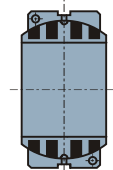
关节轴承的装配
• JDBS 015~090



Fixing direction
安装方向

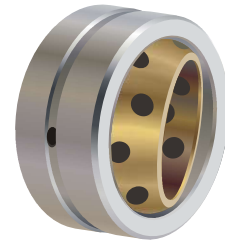


• JDBS ≥ 100



Inner ring 内圈	Material 材料	Bronze+Graphite
Outer ring 外圈	Material	S45C
	Hardness 硬度	HRC25~30

Recommend shaft & housing: 推荐轴和座孔公差
Housing: H7 座孔
Shaft: g6 轴



Unit(单位): mm

Standard No. 型号规格	d	H7	D1	h6	B	C	D	b	Alignment Angle α° 调整角度	Allowable Radial Load (kN) 径向承载	Allowable Thrust Load (kN) 轴向载荷
JDBS-015	15	$^{+0.018}_0$	26	$^0_{-0.013}$	12	9	22	4	8	6.5	0.5
JDBS-020	20	$^{+0.021}_0$	32	$^0_{-0.016}$	16	14	28		4	12.6	1.4
JDBS-025	25		42		21	18	36		5	21.8	2.5
JDBS-030	30	$^{+0.025}_0$	50	$^0_{-0.019}$	27	23	44		6	32.0	3.5
JDBS-035	35		55		30	26	49		5	43.7	4.8
JDBS-040	40		62		33	28	55		6	54.7	5.7
JDBS-045	45	$^{+0.030}_0$	72	$^0_{-0.022}$	36	31	62		5	69.7	7.2
JDBS-050	50		80		42	36	70		5	92.4	10
JDBS-060	60	$^{+0.035}_0$	100	$^0_{-0.025}$	53	45	90		6	143	16
JDBS-070	70		110		58	50	99		5	181	20
JDBS-080	80		130		70	60	115		254	30	
JDBS-090	90	$^{+0.040}_0$	140	$^0_{-0.029}$	76	65	125	6	313	36	
JDBS-100	100		160		88	75	145	6	5	544	64
JDBS-110	110		170		93	80	155		5	642	73
JDBS-120	120		190		105	90	170		6	797	94
JDBS-130	130	200	110	95	180	5	880		105		
JDBS-140	140	$^{+0.046}_0$	210	$^0_{-0.032}$	90	70	180	7	668	56	
JDBS-150	150		220		120	105	200	5	1135	129	
JDBS-160	160		230		105	80	200	8	891	73	
JDBS-180	180	$^{+0.052}_0$	260	$^0_{-0.036}$	105	80	225	6	1002	74	
JDBS-200	200		290		130	100	250	7	1434	117	
JDBS-220	220	$^0_{-0.040}$	320	$^0_{-0.036}$	135	100	275	8	1577	118	
JDBS-240	240		340		140	100	300		1720	118	
JDBS-260	260	$^{+0.052}_0$	370	$^0_{-0.040}$	150	110	325	7	2072	143	
JDBS-280	280		400		155	120	350	6	2455	172	
JDBS-300	300		430		165	120	375	7	2630	172	